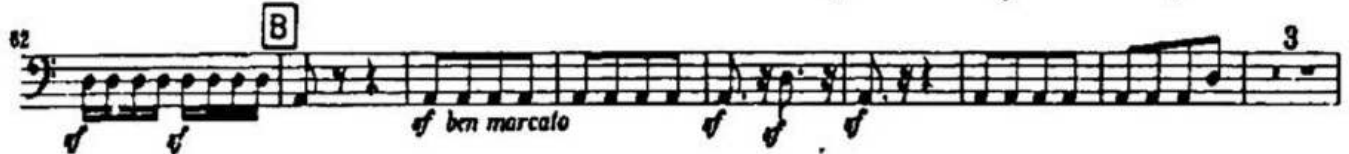
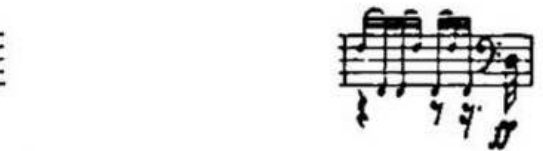


P.I. Tchaikovsky sinfonia n.4 primo movimento



Ludwig van Beethoven
Symphony No. 9 in D Minor, Op. 125





L. V. Beethoven sinfonia n. 9

Secondo movimento

Solo **E** 2 >



199 2 > 2 > 3 dim.



F 7 3 3 1 2

pp *cresc.* *piu cresc.* *f*



206 3 4 **G** 5 6 7 8 3 3 3 1 2 3 4

piu f *ff*



217 5 6 7 8 9 10 11 6 1 2 3 4

f *f* *f* *f*

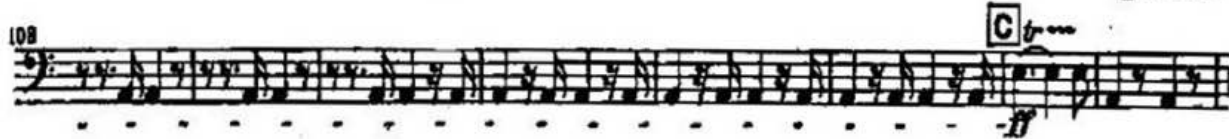


223 5 6 **H**

f *f*



Sinfonie Nr. 7 A-Dur



L. V. Beethoven sinofonia n.7

quarto movimento

The image shows a page of musical notation for the fourth movement of Beethoven's Symphony No. 7. The score is written in bass clef and includes measures 428 through 444. Measure 428 is marked with a box containing the letter 'K' and the instruction 'sonoro più f ff'. Measures 433 through 444 feature a complex rhythmic pattern with various dynamics including 'ff', 'f', and 'p'. Measure 433 has a box with the letter 'L' above it. Fingerings are indicated by numbers 1, 2, 3, 4, 5, and 6 above the notes. There are also some handwritten annotations, such as 'creato...' in measure 433 and 's' in measure 444.

L. V. Beethoven sinfonia n.5

Viol. I *pp*

340 *sempre pp*

345

350 *cresc. attacca*

374 *ff*

383

391 *3 A*

Detailed description: This image shows a page of a musical score for the first violin part of Beethoven's Symphony No. 5. The score is written on five staves. The first staff (measures 340-349) is in a treble clef and contains a melodic line with a dynamic marking of *pp* (pianissimo) and the instruction *sempre pp* (always pianissimo). Above the staff, the number 'C' is written. The second staff (measures 345-349) continues the melodic line. The third staff (measures 350-359) continues the melodic line, with a dynamic marking of *cresc.* (crescendo) and the instruction *attacca* at the end. The fourth staff (measures 374-382) is in a bass clef and contains a rhythmic accompaniment with a dynamic marking of *ff* (fortissimo). The fifth staff (measures 383-391) continues the rhythmic accompaniment. The tempo marking *Allegro* (♩ = 84) is written above the fourth staff. The number '3 A' is written above the fifth staff.

